



VIG RE zajišťovna, a.s.

Templová 747/5, 110 01 Praha 1

INFORMATION ON REINSURANCE UNDER § 82, PARAGRAPH 7 OF ACT NO. 277/2009 COLL. ON INSURANCE (INSURANCE CORPORATIONS) IN COMPLIANCE WITH § 29 TO 31 OF DECREE OF CZECH NATIONAL BANK NO. 434/2009 COLL., IMPLEMENTING SOME PROVISIONS OF THE LAW ON INSURANCE (DECREE).

Status to date: 31 March 2014
(Decisive day)

Basic data about the reinsurance company

| | |
|--|--|
| Business Name: | VIG RE zajišťovna, a.s. |
| Legal form: | Joint-stock company |
| Address: | Templová 747/5, Praha 1, PSČ 110 01 |
| Identification number: | 28445589 |
| Date of incorporation: | 18 August 2008 |
| Last date of registration of changes in the commercial register (including purpose): | 15 August 2013 - appointment of Dr. Peter Hagen and Dkfm. Karl Fink to the Supervisory Board |
| The amount of capital registered in the Commercial Register: | 2 500 000 000,- CZK |
| The amount of paid-up capital: | 100 % |
| Type, form, and the number of issued shares: | 25 000 ordinary shares in dematerialized form with a nominal value of 100 000, - CZK |

Data on members of the Supervisory Board

Dkfm. Karl Fink - Chairman of the Supervisory Board

Between 1979 and 1987 he was a Chairman of the Management Board of Interrisk – Internationale Versicherungs Aktiengesellschaft. In 1987 he became a member of the Management Board of Wiener Städtische Allgemeine Versicherungs AG and in July 2004 Deputy Managing Director. In October 2007 he was appointed as a Managing Director of Wiener Städtische Versicherung AG, Vienna Insurance Group and later, in 2009, he became member of the Management Board of Wiener Städtische Versicherung AG, Vienna Insurance Group.

Date of function: 15 August, 2013

Date of membership: 1 July 2013

The total amount of loans: 0

The total amount of guarantees: 0

Dr. Peter Hagen – Vice-Chairman of the Supervisory Board

Dr. Peter Hagen joined Wiener Städtische Versicherung AG, Vienna Insurance Group in 1989 and was elected to the Management Board effective from July 1st, 2004. Between January 1998 and December 2002, he headed the International Division & the Reinsurance Department and at the same time being the Board Member in Vienna Insurance Group's Czech and Slovak subsidiaries. From November 2007 until December 2009, Dr. Peter Hagen was also Deputy General Manager and Member of the Managing Board of Kooperativa pojišťovna, a.s., Vienna Insurance Group in the Czech Republic. Since 2008 he was Chairman of the board of VIG RE zajišťovna, a.s. In October 2009, Dr. Hagen was appointed as a "Deputy General Manager" of Vienna Insurance Group and later, in 2012 he became Chairman of the board of Directors in VIENNA INSURANCE GROUP AG Wiener Versicherung Gruppe.

Date of function: 15 August, 2013

Date of membership: 1 July 2013

The total amount of loans: 0

The total amount of guarantees: 0

Mag. Peter Höfinger - Member of the Supervisory Board

In 2007, Mag. Peter Höfinger was appointed as a member of the Management Board of Wiener Städtische Versicherung AG, Vienna Insurance Group. Before that, he was Member of the Managing Board of Donau Versicherung AG, Vienna Insurance Group.

Date of function: 18 August 2009

The total amount of loans: 0

The total amount of guarantees: 0

Ing. Vladimír Mráz - Member of the Supervisory Board

Date of function: 28 March 2013

The total amount of loans: 0

The total amount of guarantees: 0

Dr. Wolfgang Eilers - Member of the Supervisory Board

Dr. Wolfgang Eilers was since 1990 a Member of the Board of Management of Hamburger Internationale Rückversicherung AG (HIR) and since 2004 he became a Chairman of the Board. By today, he is a Chief Executive officer of Chilmington Internationale Group and Director of some subsidiaries. He is also a member of the Supervisory Board of agents Consulting GmbH Co. KGaA and agent Management GmbH, Ellerau, President of the Conseil d'Administration of Pavant International Re, Paris, and a Chairman of the Supervisory Board of Komrowski Group, Hamburg.

Date of function: 18 August 2009

The total amount of loans: 0

The total amount of guarantees: 0

Mag. Roland Gröll - Member of the Supervisory Board

Education: College of Business Administration

Areas of responsibility: Finance and Accounting

he joined the Vienna Insurance Group in 1994 and is currently head of finance and accounting.

Date of function: 27 April 2011

The total amount of loans: 0

The total amount of guarantees: 0

Ing. Juraj Lelkes - Member of the Supervisory Board

Ing. Lelkes is a Chairman of the Board of Directors and CEO in Kooperativa poisťovňa, a.s. Vienna Insurance Group, in the Slovak Republic. He has served in leadership positions since its inception in 1990. During his many years of work, he held key management positions in the field of economy and trade. In 1998 he became a member of the Board of Directors and since May 2003 became a Chairman and Chief Executive Officer in Kooperativa poisťovňa, a.s. Vienna Insurance Group.

Date of function: 18 August 2009

The total amount of loans: 0

The total amount of guarantees: 0

Data on members of the Board of Directors

Dkfm. Johannes Martin Hartmann - Chairman of the Board

Dkfm. Johannes Martin Hartmann worked since 2001 in various areas within Swiss Re. Since 2004 he was responsible for the Polish market, since 2009 he controlled the areas of life and non-life insurance in Poland, Hungary, Romania and Bulgaria. Since 2011, as a Head of Market Underwriting CEE he was responsible for the underwriting of non-life insurance and Account Management on all markets of Central and Eastern Europe.

Date of function: 1 July 2013

Date of membership: 1 October 2012

The total amount of loans: 0

The total amount of guarantees: 0

Mag. Dušan Bogdanović – Member of the Board

Since 2001, Mag. Bogdanović worked as an IT manager in insurance company Osiguranje Europe in Belgrade. In 2002, he joined the Wiener Städtische Versicherung AG, Vienna Insurance Group as a member of the founding team Wiener Städtische Osiguranje a.d.o., in which he worked in Belgrade until 2007. Mag. Bogdanović was also a representative of Vienna Insurance Group in Russia, deputy of the CEO and a member of the Board of Directors in insurance company MSK-Life in Moscow.

Date of function: 1 September 20011

The total amount of loans: 0

The total amount of guarantees: 0

Mag. Claudia Stránský - Member of the Board

Mag. Stránský cooperated with insurance company Wiener Städtische Versicherung AG, Vienna Insurance Group since 1986. Since 1998, she worked as a country manager in the same insurance company and in 2007 she became an Advisor to the Board of Kooperativa, poisťovňa, a.s., Vienna Insurance Group. Mag. Stránský is also a member of the Supervisory Board of Kniazha z.a.t., VIG, Ukraine.

Date of function: 1 September 2011

The total amount of loans: 0

The total amount of guarantees: 0

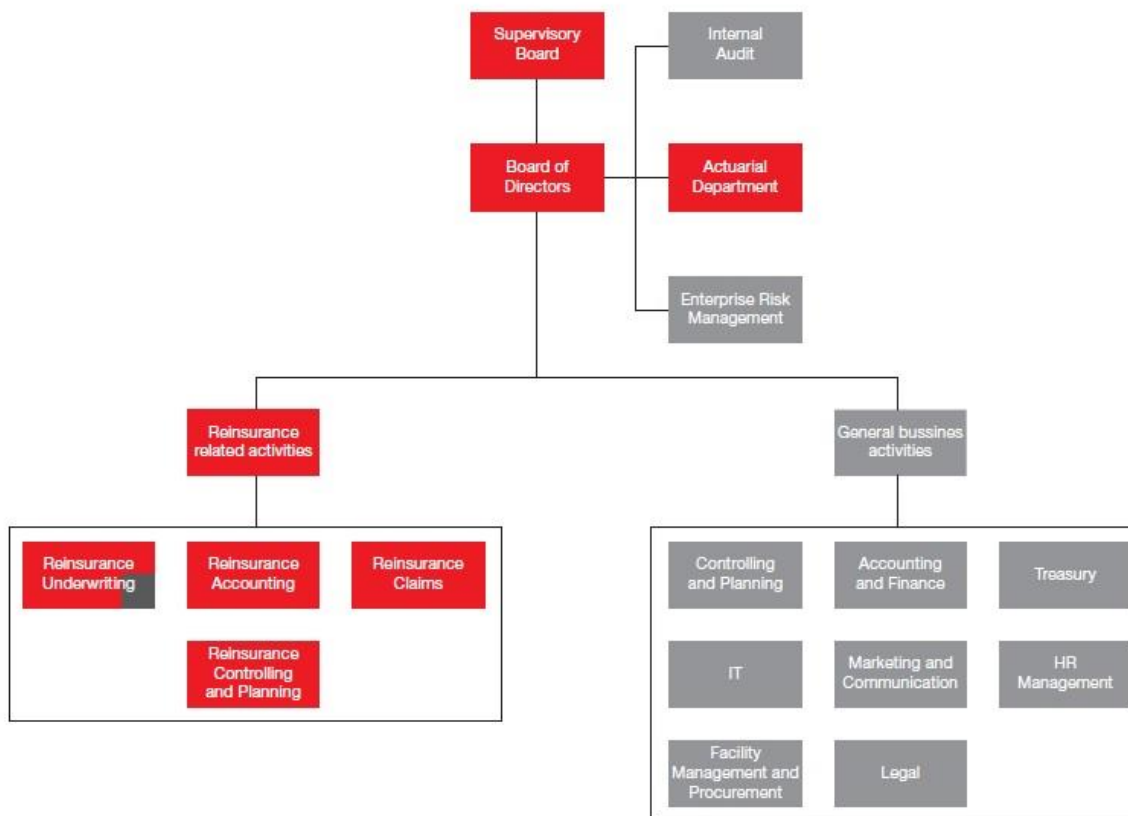
Organizational structure of the reinsurance

The Company has not established any branch office.

As of the reporting date the number of employees is 26.

The Company secures the majority of its activities beyond the performance of the major reinsurance activity in the form of outsourcing, securing the non reinsurance-related back office by using resources from VIG.

Organizational structure of the Company:



- Life/Health underwriting supported by VIG actuarial department
- outsourced to VIG

Information on Shareholders of the Company

| Business Name | Legal form | Address | Share capital | Share of voting rights |
|---|---------------------|---------------------------------------|---------------|------------------------|
| VIENNA INSURANCE GROUP AG Wiener Versicherung Gruppe | joint-stock company | Schottenring 30 1010 Wien | 70 % | 70% |
| Donau Versicherung AG Vienna Insurance Group | joint-stock company | Schottenring 15 1010 Wien | 10 % | 10% |
| Kooperativa pojišťovna, a.s., Vienna Insurance Group | joint-stock company | Pobřežní 665/21 186 00 Praha 8 | 10 % | 10% |
| Kooperativa poisťovňa, a.s. Vienna Insurance Group | joint-stock company | Štefanovičova 4, 816 23 Bratislava | 10% | 10% |

Up to the above stated date, the Company does not have any liabilities or receivables to the shareholders. The Company also up to that date has no assets in securities issued by shareholders and no obligations of these securities. The Company did not issue any guarantee for the shareholders and did not accept any guarantees from the shareholders.

Details of group structure

Persons forming the holding

1. Controlled Entity

VIG RE zajišťovna, a.s.

located at Templová 747/5, 110 01 Praha 1

IR: 28445589, registered in the Commercial Register kept by Municipal Court in Prague, section B, insert 14560

The Czech National Bank granted VIG RE zajišťovna, a.s. a license to carry out reinsurance activities, valid from 8 August 2008. This made VIG RE zajišťovna, a.s. the first reinsurance company with a Czech license and in the beginning of September 2008 the Company commenced its business activities in Prague.

VIG Re focuses on reinsurance activities on the CEE market, provides services in property and casualty, life and health, and also offers facultative reinsurance

Scope of business is specified in the company's Articles of Association and Trade Register.

2. Controlling Person

VIENNA INSURANCE GROUP AG Wiener Versicherung Gruppe located at Schottenring 30, Wien 1010, Republik Österreich, registered in the Commercial Register kept by the Commercial Court Vienna, FN Section, File 75 687 F.

VIENNA INSURANCE GROUP AG Wiener Versicherung Gruppe is a joint stock company, which runs the insurance business. Vienna Insurance Group owns shares of VIG RE zajišťovna, a.s., the total nominal value is 70% of the capital and represents 70% of the voting rights.

3. Related Entities

List of subsidiaries of the VIENNA INSURANCE GROUP AG Wiener Versicherung Gruppe and VIG RE zajišťovna, a.s., according to the share capital are set out in the Report on Related Parties which is published in the Annual Report of VIG RE zajišťovna a.s.

Ownership Structure of VIG RE zajišťovna, a.s.:

| <i>Company</i> | <i>Country of origin</i> | <i>Capital share</i> | <i>Share of voting rights</i> |
|---|--------------------------|----------------------|-------------------------------|
| VIG RE zajišťovna, a.s. | Czech Republic | Mother company | Mother company |
| *MuVi Re S.A. | Luxemburg | 100.00% | 100.00% |
| **Wiener Re Akcionarsko Društvo za Reosiguranje | Srbsko | 99.3% | 99.3% |

* As of March 31, 2014, VIG RE zajišťovna, a.s. has a obligation to MuVi Re of € 0

**As of March 31, 2014, VIG RE zajišťovna, a.s. has a receivable to Wiener Re of € 758 120

Information on the activities of Reinsurance Company

- ▶ Reinsurance activity under § 7 paragraph 3 of Act No. 363/1999 Coll. Insurance and amending certain related Acts, as amended (the Insurance Act), within all branches of life insurance listed in Appendix 1 of the Insurance, Part A and all non-life insurance listed in Schedule 1 of the Insurance Act, Part B.

Activities related to reinsurance activities under § 7 paragraph 3 of the Law on Insurance in conjunction with § 3, paragraph 4 and § 2, paragraph 1. h) of the Insurance Act:

- ▶ investigation of reinsurance events;
- ▶ mediation activities undertaken in connection with reinsurance activities;
- ▶ consulting services related to reinsurance;
- ▶ educational activities for reinsurance intermediaries and independent assessors of reinsurance events.

Reinsurance activities referred to the decisive date are of actual exercise. Performance of these activities was not limited or suspended by the Czech National Bank.

Balance Sheet: The report is Annex 1 of this document.

Profit and Loss Account: The report is Annex 2 of this document.

Reinsurance ratios as at 31 March 2014

| | | |
|---|--|--------------|
| Return on average assets (ROAA) | 100% * Profit or loss for the period / Total Assets | 2,3% |
| Return on average equity (ROAE) | 100% * Profit or loss for the period / Equity | 13,5% |
| Combined ratio in non-life insurance | 100% * (cost of claims, including changes in reserves for claims, net of reinsurance + Net operating expenses) / earned premiums, net of reinsurance | 96,4% |

| Solvency* | Life | NonLife | Total |
|---|-------------|----------------|--------------|
| Available solvency margin | | | 115,10 |
| Required solvency margin | 24,29 | 43,72 | 68,00 |
| Guarantee fund | 4,77 | 4,77 | 9,55 |
| The ratio of the actual and required solvency margin | | | 169% |
| The ratio of the GF and the sum of items according to § 18 | | | 8% |

| The adjusted solvency margin (+ calculation) | |
|--|---------------|
| Related reinsurance 1 | MuVi Re, S.A. |
| Related reinsurance 2 | Wiener RE |
| The available solvency margin of reinsurance holding | 125,82 |
| Proportional share of the insurance holding company in the capital of a related reinsurance 1 | 1 |
| Proportional share of the insurance holding company in the capital of a related reinsurance 2 | 1 |
| Available solvency margin of related reinsurance 1 | 4,02 |
| Available solvency margin of related reinsurance 2 | 6,57 |
| The book value of the share of a related reinsurance 1 | 4,00 |
| The book value of the share of a related reinsurance 2 | 6,72 |
| Required solvency margin for reinsurance holding | 68,00 |
| Required solvency margin for a related reinsurance 1 | 3,20 |
| Required solvency margin for a related reinsurance 2 | 4,50 |
| The adjusted solvency margin | 49,98 |

* In mil. EUR

Real and nominal (notional) value of the derivatives as derivatives collectively agreed to the provision and agreed collectively as derivatives for trading or speculation:

| EUR | Fair value | Nominal value |
|--|------------|---------------|
| Derivatives agreed to ensure | 3.500.000 | 8.869,18 |
| Negotiated derivatives for trading or speculation | 0 | 0 |

Attachments:

Annex 1 – BALANCE SHEET

Annex 2 – INCOME STATEMENT

In Prague on 5 March 2014

NON-CONSOLIDATED BALANCE SHEET AS OF 31 March 2014

| ASSETS | Notes | 31.3.2014 |
|---|-------|------------------|
| In EUR '000 | | |
| Intangible assets | | 1 024 |
| Property, plant and equipment | | 117 |
| Investment in subsidiary | | 10 722 |
| Financial investments | | 441 269 |
| Financial assets held to maturity | | 175 908 |
| Financial assets available for sale | | 101 384 |
| Financial assets held for trading | | 7 |
| Loans | | 1 447 |
| Deposits due from cedants | | 162 523 |
| Receivables | | 59 342 |
| Ceded share of reinsurance liabilities | | 137 899 |
| Current tax assets | | 338 |
| Other assets | | 876 |
| Deferred acquisition costs | | 3 737 |
| Cash and cash equivalents | | 7 884 |
| Total ASSETS | | 663 208 |
| EQUITY AND LIABILITIES | | |
| Shareholders' equity | | |
| Share capital | | 101 958 |
| Other components of equity | | 6 544 |
| Retained earnings | | 8 856 |
| Total EQUITY | | 117 358 |
| Reinsurance liabilities | | 444 032 |
| Unearned premiums | | 24 506 |
| Outstanding claims | | 265 014 |
| Life reinsurance provision | | 154 512 |
| Other | | 0 |
| Liabilities | | 99 846 |
| Deferred tax liabilities | | 87 |
| Current tax liabilities | | 866 |
| Other liabilities | | 1 019 |
| Total LIABILITIES | | 545 850 |
| Total EQUITY AND LIABILITIES | | 663 208 |

| NON-CONSOLIDATED INCOME STATEMENT FOR THE PERIOD ENDED 31 March | | Consolidated |
|--|--------------|---------------------|
| Income Statement | Notes | 2014 |
| in EUR '000 | | |
| Premiums | | |
| Premiums written – Gross | | 111 935 |
| Premiums written – Ceded | | 46 651 |
| Premiums written - Retention | | |
| Change due to provision for premiums – Gross | | 6 361 |
| Change due to provision for premiums – Ceded | | 2 887 |
| Net earned premiums | | 61 810 |
| Investment Result | | |
| Investment and interest income | | 4 044 |
| Investment and interest expenses | | 128 |
| Total investment result | | 3 916 |
| Other income | | 2 |
| Claims and insurance benefits | | |
| Expenses for claims and insurance benefits – Gross | | 45 230 |
| Expenses for claims and insurance benefits – Ceded | | 18 901 |
| Claims and insurance benefits – retention | | |
| Change in claims and other reinsurance liabilities – Gross | | 7 394 |
| Change in claims and other reinsurance liabilities – Ceded | | -6 137 |
| Total expenses for claims and insurance benefits | | 39 860 |
| Acquisition expenses | | |
| Commission expenses | | 23 531 |
| Other acquisition expenses | | 259 |
| Change in deferred acquisition expenses | | 553 |
| Commission income from retrocessionaries | | 2 584 |
| Total acquisition expenses | | 20 653 |
| Other operating expenses | | 492 |
| Other expenses | | 15 |
| Profit before taxes | | 4 708 |
| Tax expense | | 881 |
| Profit for the period | | 3 827 |